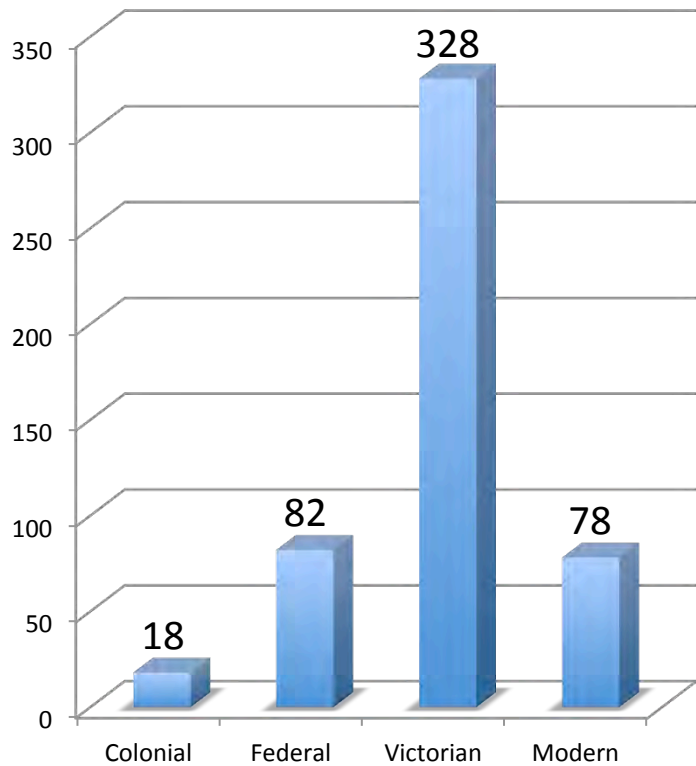




Georgian, Federal, Greek, Gothic,  
Italianate, 2nd Empire, Queen Anne

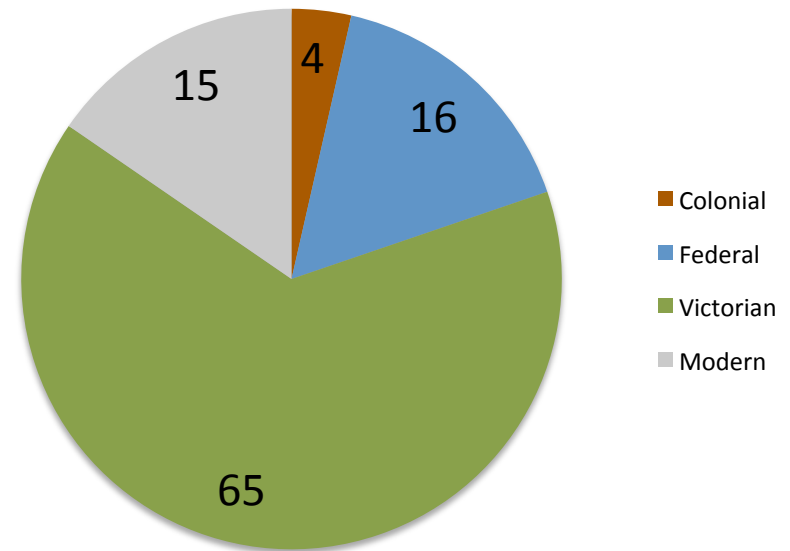
# Is New Castle a Colonial or Historic Town?

Distribution of the 506 buildings in the 1984 Historic District Nomination



Count

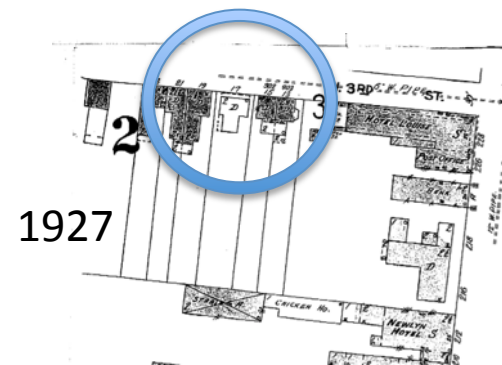
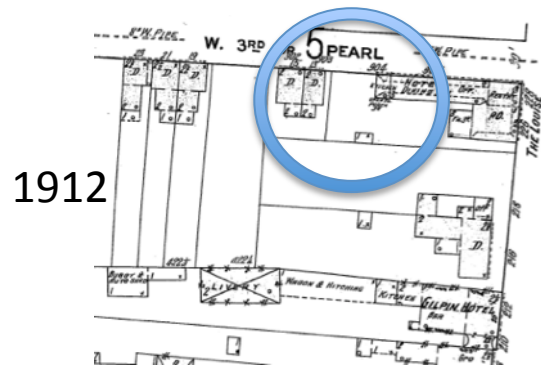
Colonial	1600-1780
Federal	1780-1830
Victorian	1830-1900
Modern	1900-1984



Percentage  
 Georgian, Federal, Greek, Gothic, Italianate, 2nd Empire, Queen Anne

# How old is MY (or THAT) house?

- 1) Easy: Look at it for 5 seconds
- 2) Easy: Check maps (available 1803-1925)

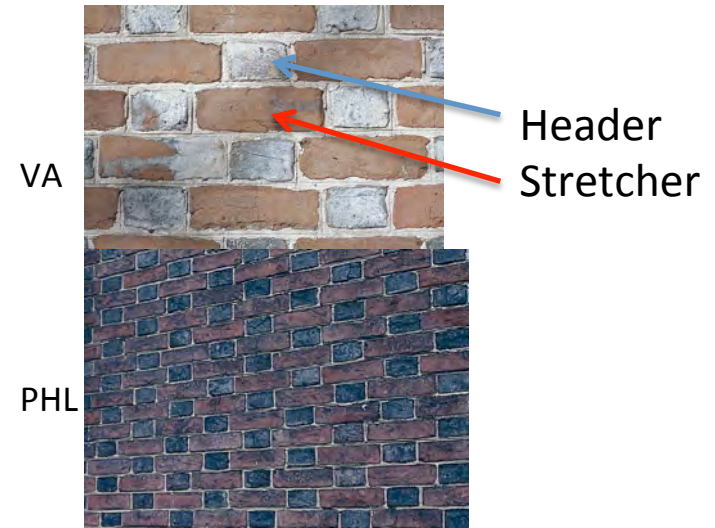


- 3) Easy: Using owner's name from maps, check if they are mentioned in <http://nc-chap.org> (e.g. Eckman's deed and title searches).
- 4) Harder: do a chain of titles.

## Flemish bond:

alternating header and stretcher in each row.  
Used in Georgian and Federal periods in façade.  
In early Georgian, the headers were often glazed.

The glaze color is from the smoke used to fire them, and varies with wood used: in Va, oak gives blue gray; in Phil., other wood gives black color.



## English bond:

Rows of all headers alternate with rows of all stretchers. Common in water tables, and sides and back of early Georgian (and one colonial revival) buildings.



## Running bond :

All stretchers. Used from Greek Revival on.

9 The Strand



## Common bond:

Rows of all headers are separated by 3-12 rows of all stretchers. Used on sides and backs; rarely on front façade.

Georgian, Federal, Greek, Gothic,  
Italianate, 2nd Empire, Queen Anne  
Amstel House



# The How Old, What Style is it Challenge

## New Castle version

First we'll review the styles, then I'll show 24 New Castle buildings. Choose a style and date from the list, keep track of the number right. (Don't shout out the answers, please.) (Don't worry about getting the years exactly right, just try to get a feel feel for the order of the periods.)

- |                           |                      |
|---------------------------|----------------------|
| 1) Early Georgian         | 1700-1750            |
| 2) Mid Georgian           | 1750-1780            |
| 3) Federal                | 1780-1812, 1824-1840 |
| 4) Greek Revival          | 1825-1855            |
| 5) Gothic Revival         | 1840-1900            |
| 6) Italianate             | 1850 -1900           |
| 7) 2 <sup>nd</sup> Empire | 1860-1890            |
| 8) Queen Anne             | 1870-1900            |
| 9) Bungalow               | 1890-1930            |
| 10) Colonial Revival      | 1880-1950            |

# Architectural Features – Early Georgian, 1700-1750



String/belt course

Glazed header  
Flemish bond  
Brickwork

Arch

Water table



Amstel House, 2 E 4th

McWilliams House, 8 The Strand

# Early vs Mid Georgian

Two buildings built in stages in different eras show changes in styles

212 Delaware, Booth House  
1795, <1719, 1860s



No arches

Arches

No String course  
String course

Courthouse  
(1845), 1732, 1756, 1802



"Symmetry" (vertical alignment of windows) in both sides

# Early/Late Federal

~1780-1812/1824-1840

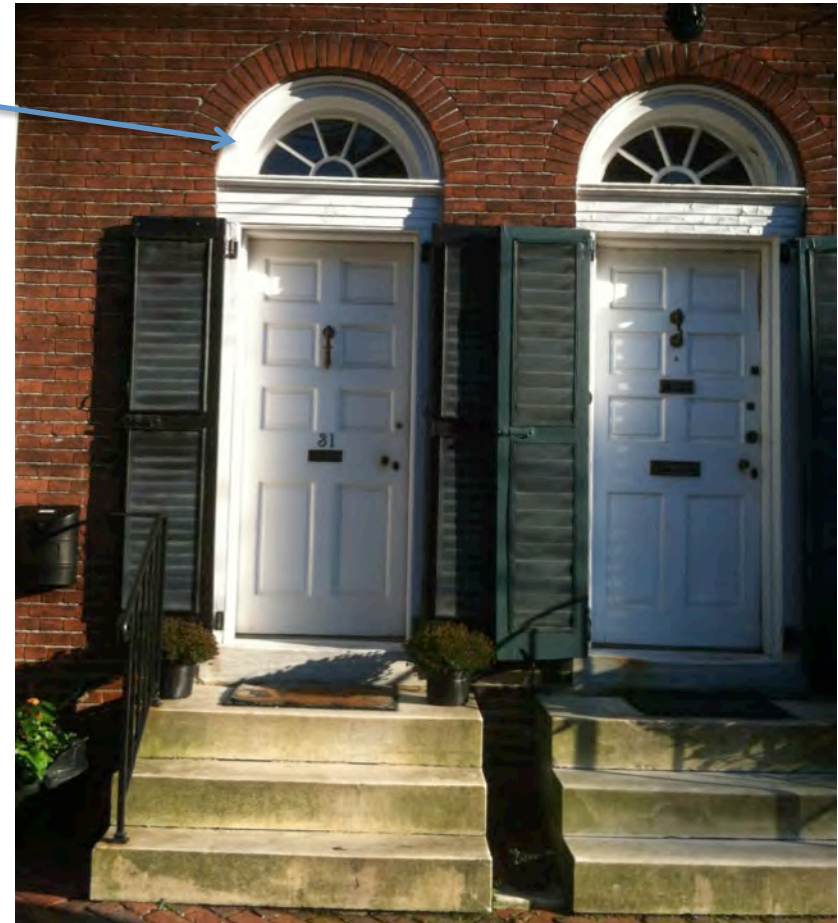


18 E 3rd, c1800



- Fanlights with tracery
- No string course or water table
- "Symmetrical"
- Flemish bond, not glazed header
- Medium mortar joints, not pressed brick
- 6-8 panel door

27-29 The Strand, c1826





# Greek Revival (I)

## Temple Style Public Buildings & High Style Residences

Latrobe, First Bank of Pennsylvania, 1801



Strickland, Second Bank of United States, 1824



T. U. Walter, Girard College, 1847



Winterthur, c1840



Chelsea, Delaware City, 1848



“Bank House”, Milford, 1850



# Greek Revival II

(c1825-c1855)

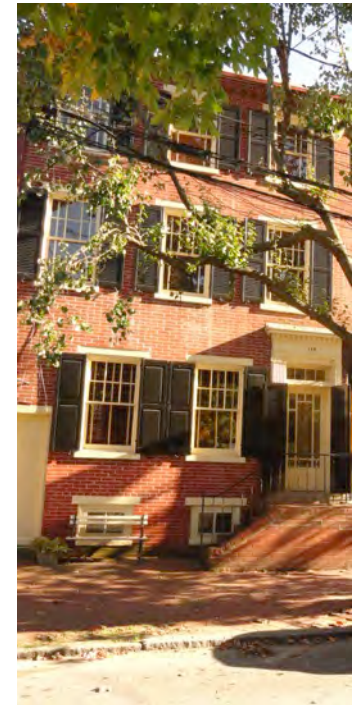
Urban houses in New Castle



32 W 4th, c1850



10-16 E4th, c1840



119 E 3rd

Flat or shallow pitch roof, short 3<sup>rd</sup> story, no or rectangular transom, may not be symmetrical, running bond (all stretchers, no headers), smooth brick, narrow mortar joint

# Gothic Revival (1840-1901)

24 W 4<sup>th</sup> St, Aquila Hizar, 1876



39 W, 5<sup>th</sup>



125 W 7<sup>th</sup>, Dr. A. V. Lesley, 1855



138 E 4<sup>th</sup>, Mt. Salem ME Church, 1878



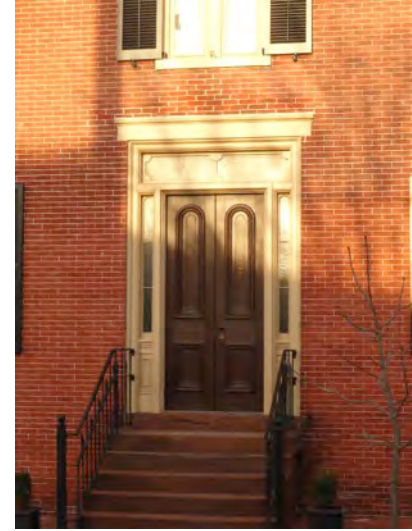
Gothic distinguishing features: “verticality”, steep pitch roof, cross gables, v-shaped barge boards, one story porch

# 2<sup>nd</sup> Empire

1860-1890

Key characteristic: **Mansard roof** (double pitch roof, the bottom very steep, usually with dormers) gives 3<sup>rd</sup> floor.

Frequently bracketed cornices, tall windows and doors (often a pair of 2 panel doors with glass in upper panels)



122 E3rd, 1875



17 W 4<sup>th</sup>, 1879



125 E3rd, 1884, 427 Delaware 1875



# Italianate (1850 - 1900)

Bracketed cornices and usually flat or shallow pitched roofs.

American Bracketed houses;

Renaissance Revival public buildings





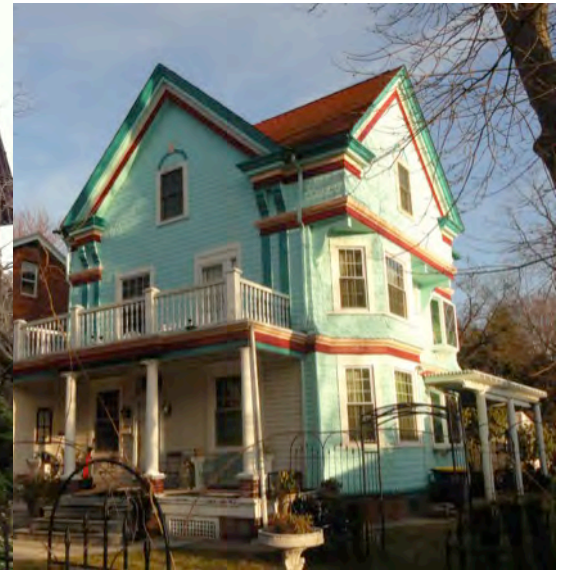
# Queen Anne (1870-1900)

- Steeply pitched roof
- Asymmetrical, cross gables
- Overhanging eaves
- Projecting windows breaking up planes
- Porches
- Multicolor

80 W 5<sup>th</sup> 1894, J. T. Eliason



11 W 6<sup>th</sup> 1898



# Colonial revival (1880-1950)

Apartments at 5<sup>th</sup> & Delaware, U. S. Post office, 1935



Apartments: flemish bond  
P.O.: English bond (alternate rows; all header, all stretcher)  
random dark bricks



Apartments on site of Earle Theatre; earlier Knights of Pythias Hall

# Bungalow (1890-1930)

One, 1 1/2 or two stories, wide variation in structures;  
Some designed and built locally, some from kits

50 W 5<sup>th</sup>, 1930



108 W 6<sup>th</sup>, 1920, Luoma house





# Late Federal, c1836

Fanlight, symmetrical, flemish bond, 6/6 windows, 8 panel door

Harmony House, 46 E 3rd



Georgian, Federal, Greek, Gothic, Italianate, 2nd Empire, Queen Anne

# Gothic, 1855

Steep pitched roof, cross gables, one story porch,  
v-shaped barge boards, 2/1 windows

Lesley Mansion, 123 W 7th



Georgian, Federal, Greek, Gothic, Italianate, 2nd Empire, Queen Anne

# 2<sup>nd</sup> Empire (1880) / Queen Anne (1895)

Left: Mansard roof, projecting window, bracketed cornice, 2/2, 1/1 windows  
Right: steep roof, cross gables, fish scale siding

412, 414 Delaware



Georgian, Federal, Greek, Gothic, Italianate, 2nd Empire, Queen Anne

# Early Georgian (early 1700's) (heavily modified several times)

String course, water table; some brickwork may be original, may be reproduction

"Hotel Louise", "David Finney Inn"



Delaware & W 3<sup>rd</sup> c1891; Mary Robeson (1833-1920)



# Italianate (c1881)

Bracketed cornice, elaborate gingerbread



16 W 4th

Georgian, Federal, Greek,  
Gothic, Italianate, 2nd Empire,  
Queen Anne

# Late Georgian (1800)/Early Federal

Unglazed flemish bond façade, fanlight, Palladian window, stone sills and lintels, 6/6 windows, dentil cornice, symmetrical

42 The Strand, George Read II house



Georgian, Federal, Greek,  
Gothic, Italianate, 2nd Empire,  
Queen Anne

# 2<sup>nd</sup> Empire

Mansard roof, bracketed cornice, 2/2 windows, running bond, [fanlight]

602-4 Delaware

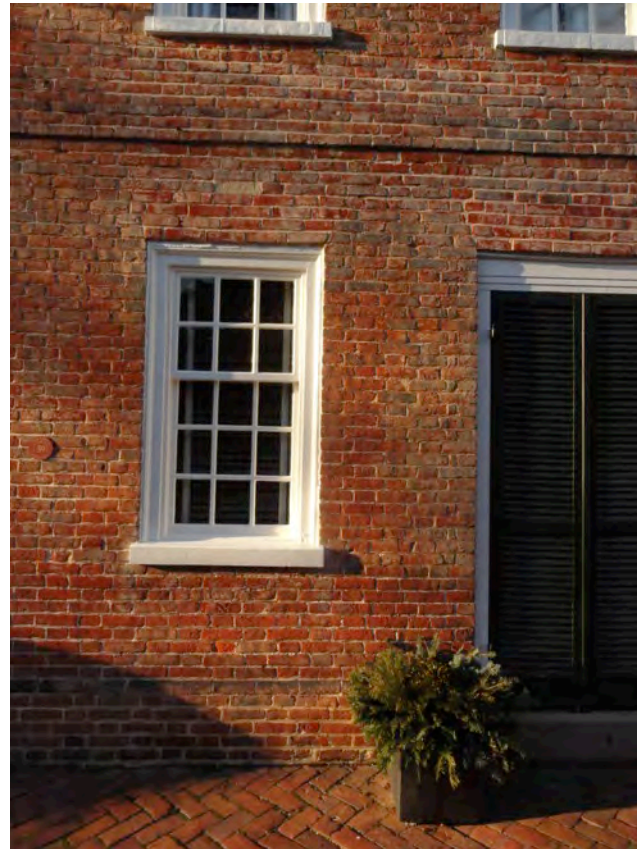


Georgian, Federal,  
Greek, Gothic,  
Italianate, 2nd  
Empire, Queen  
Anne

# Early Georgian (1704?)

String course, water table, dentil cornice, 6/9 windows, symmetrical, flemish bond, no fanlight

Rosemont house, 110 Delaware



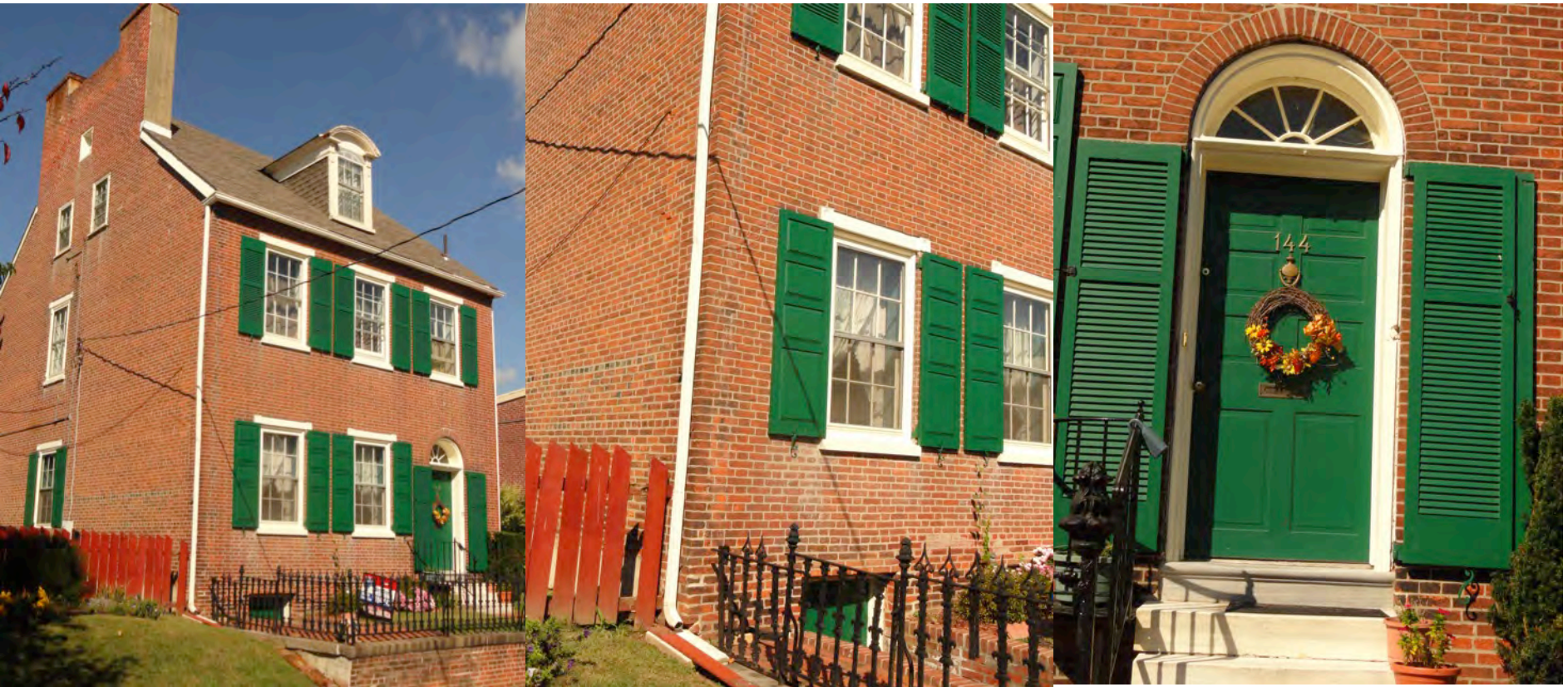
Georgian, Federal,  
Greek, Gothic,  
Italianate, 2nd  
Empire, Queen Anne



# Late Federal, c1830

Fanlight, flemish bond front, 7 course common bond side, 8 panel door, 6/6 windows

144 E 4th



# Greek Revival, c1826

Short 3<sup>rd</sup> story, rectangular transom with brackets, 4 panel door, running bond, pressed brick, narrow mortar joint

But: fairly steep roof, symmetrical. Was house in forefront of style or modified later?

9 The Strand



# Gothic

Steep roof; cross gables, 1/1 windows?

39 W 5<sup>th</sup>



# Italianate (1878)

Bracketed cornice, shallow roof, porch, flat façade, 2/2 windows

15 W 4th



# Georgian (1750)

String course, water table, dentil cornice, 6/6 windows, symmetrical, flemish bond above water table, English below, no fanlight  
Bricks not glazed.



# Italianate (c1880)

Decorative brickwork; pressed tin cornice instead of brackets, running bond, flat roof

13 W 3rd



Georgian, Federal, Greek,  
Gothic, Italianate, 2nd Empire,  
Queen Anne

# Queen Anne (c1900), Bungalow (c1920)

Steep cross gables, projecting bay window and porch

182,184 E 4th

Single story, owner thinks building a kit, but no match in Sears or Aladdin.

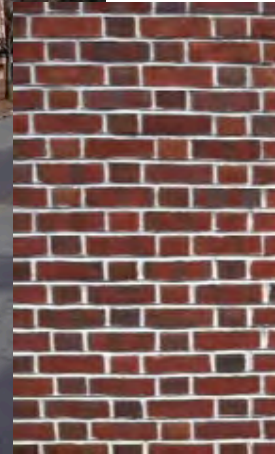


Georgian, Federal, Greek,  
Gothic, Italianate, 2nd Empire,  
Queen Anne

# Colonial Revival, c1980?

Flemish bond, 8/8 windows, 6 panel door, concrete window sills and lintels

113/115 Delaware





# Georgian (1707, 1712?)



# Bungalow, Aladdin kit house, 1917

One story

166 E 3<sup>rd</sup>



Georgian, Federal, Greek,  
Gothic, Italianate, 2nd Empire,  
Queen Anne, Colonial Revival,  
Bungalow

# Italianate (1876-owner, mid 1800s NHR)

Bracketed cornice, pressed brick, running bond, 2/2 windows, fanlight, 4 panel door (the latter replacing in 1990's cheap colonial revival windows and doors from the 70's)



Georgian, Federal, Greek,  
Gothic, Italianate, 2nd Empire,  
Queen Anne

# Queen Anne (1899, 1894)

Cross gables, bay window, porch, fish scale siding, colorfull

80 W 5<sup>th</sup> St. J. T. Eliason



72 W 5<sup>th</sup>, L. E. Eliason



# Greek revival (c1850)

Assymetrical, rectangular transoms, running bond, but roof not shallow pitched, no frieze band 3<sup>rd</sup> floor

19 W 3rd



Georgian, Federal, Greek,  
Gothic, Italianate, 2nd Empire,  
Queen Anne

As you walk around,

**LOOK UP!**

David Ames

UD Center for Historic Architecture and Design

Georgian, Federal, Greek, Gothic,  
Italianate, 2nd Empire, Queen Anne